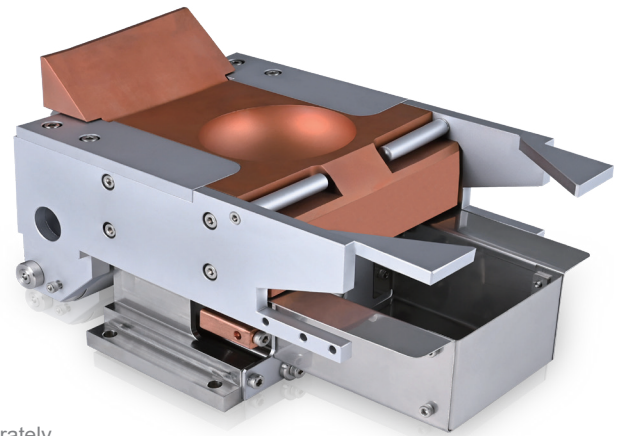


270° AN-9020

The AN-9020 is a 270° electron gun, and even if foreign substances or particles fall into the filament during deposition, there is minimal structural interference, and it minimizes thermal interference on the deposition material.

Therefore, it enables highly stable electron beam generation and high power, making it suitable for effectively melting powders or materials.

The AN-9020 is well-suited for high precision and multi-layer processes, and it finds applications in various fields, including test equipment, vacuum deposition equipment, semiconductor equipment, and optical equipment.



* Can be used in conjunction with ORIGIN's ISA-7000 product.

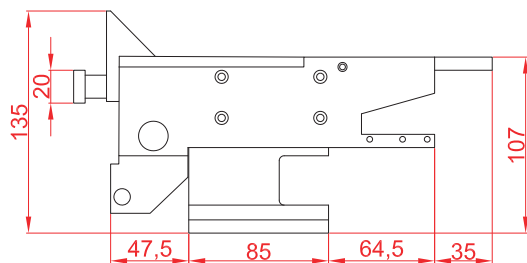
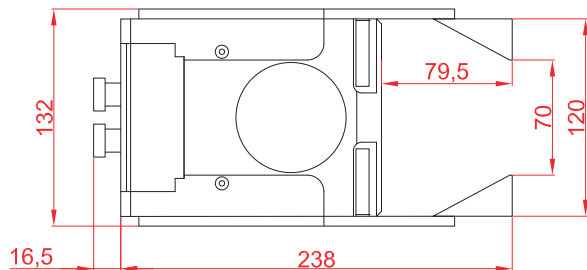
* The configuration consists of a single electron gun, and the crucible is sold separately.

* Some layouts may not be installable, so please inquire before placing an order.

* We cannot guarantee the product's performance when used in combination with products from other manufacturers.

External Dimensions

(Unit: mm)



Technical Specifications

Model	AN-9020
Application	Metal films
Beam deflection angle	270°
Maximum output power	16KW
Accelerating voltage	-800Vdc
Beam deflection adjust	Deflection adjust bar
Beam deflection current	N/A
Deflection max frequency	N/A
Beam scanning current X axis	N/A
X axis scanning max frequency	N/A
Beam scanning current Y axis	N/A
Y axis scanning max frequency	N/A
Operation pressure	2Kg / cm ²
Cooling water flow rate	5 to 8 L/min
Fillament current	50A
Ground	Lees than ground resistantce 10 ohm
External dimensions (Unit: mm)	132 (W) X 273 (D) X 135 (H)
Weight	Approximately 11kg

