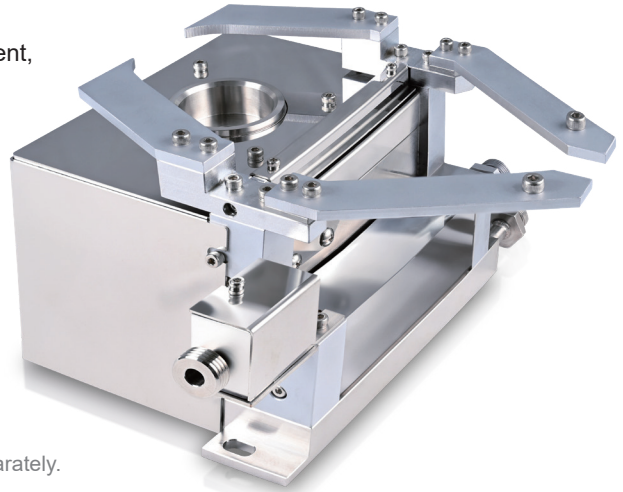


180° AN-9000

The AN-9000 is a 180° basic electron gun that melts powders or materials with a very stable beam and high power.

Therefore, it is applicable to test equipment, vacuum deposition equipment, semiconductor equipment, and optical equipment.



* Can be used in conjunction with ORIGIN's ISA-7000 product.

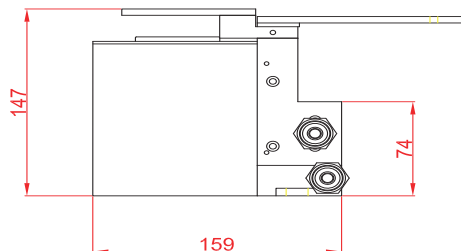
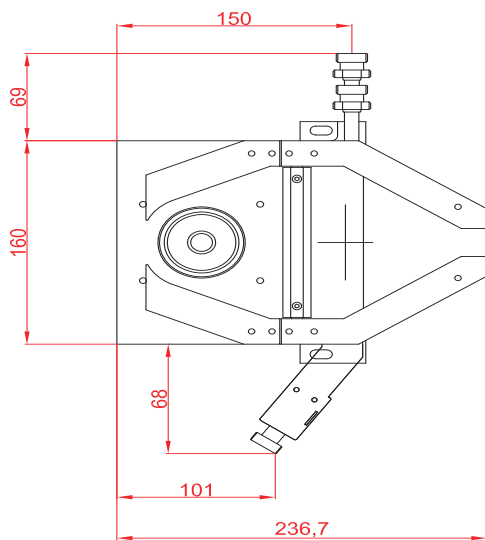
* The configuration consists of a single electron gun, and the crucible is sold separately.

* Some layouts may not be installable, so please inquire before placing an order.

* We cannot guarantee the product's performance when used in combination with products from other manufacturers.

External Dimensions

(Unit: mm)



Technical Specifications

Model	AN-9000
Application	Oxide films & Metal films
Beam deflection angle	180°
Maximum output power	10KW
Accelerating voltage	-3000 to -10000Vdc
Beam deflection adjust	Electronmagnet
Beam deflection current	0 to 2.5A
Deflection max frequency	5KHz -3dB
Beam scanning current X axis	60Hz (X axis) Max output (10App, ±2Adc)
X axis scanning max frequency	10KHz -3dB
Beam scanning current Y axis	60Hz (Y axis) Max output (10App, ±2Adc)
Y axis scanning max frequency	10KHz -3dB
Operation pressure	2Kg / cm ²
Cooling water flow rate	5 to 8 L/min
Fillament current	0 to 30A
Ground	Lees than ground resistantce 10 ohm
External dimensions (Unit: mm)	194 (W) X 158 (D) X 152 (H)
Weight	Approximately 9kg

